

C INSTRUMENTS

JAZZ BLUES

M. BRADFORD

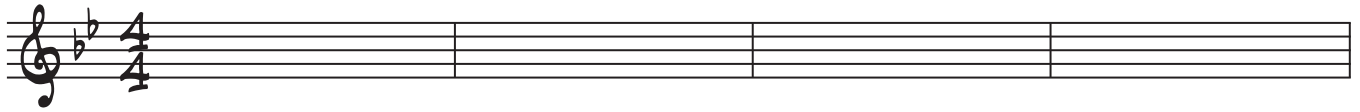
B^{b7}

E^{b7}

B^{b7}

F^{MIN7}

B^{b7}



E^{b7}

E^{DIM7}

B^{b7}

D^{MIN7(b5)}

G^{7(b9)}



5

C^{MIN7}

F⁷

B^{b7}

G^{7(b9)}

C^{MIN7}

F⁷



9

B FLAT INSTRUMENTS

JAZZ BLUES

M. BRADFORD

C⁷

F⁷

C⁷

G^{MIN}⁷

C⁷



F⁷

F[#]DIM⁷

C⁷

E^{MIN}⁷(b5)

A⁷(b9)



5

D^{MIN}⁷

G⁷

C⁷

A⁷(b9)

D^{MIN}⁷

G⁷



9

E FLAT INSTRUMENTS

JAZZ BLUES

M. BRADFORD

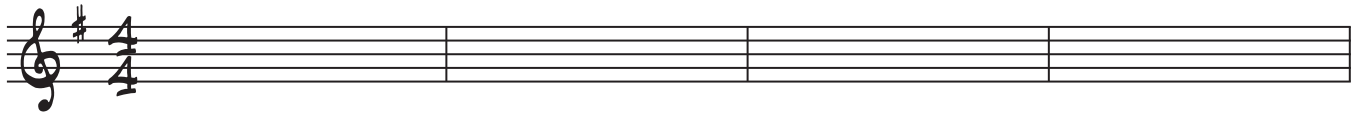
G⁷

C⁷

G⁷

D^{MIN}⁷

G⁷



C⁷

C^{#DIM}⁷

G⁷

B^{MIN}^{7(b5)}

E^{7(b9)}



5

A^{MIN}⁷

D⁷

G⁷

E^{7(b9)}

A^{MIN}⁷

D⁷



9

BASS CLEF INSTRUMENTS

JAZZ BLUES

M. BRADFORD

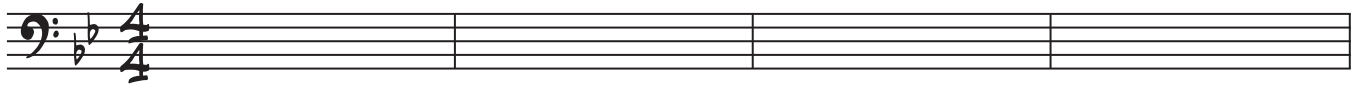
B^{b7}

E^{b7}

B^{b7}

F^{MIN7}

B^{b7}



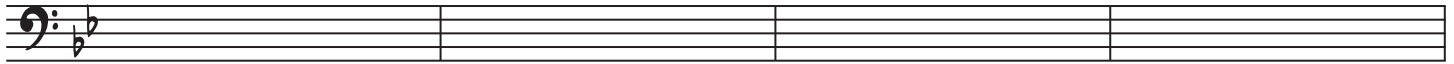
E^{b7}

E^{DIM7}

B^{b7}

D^{MIN7(b5)}

G^{7(b9)}



5

C^{MIN7}

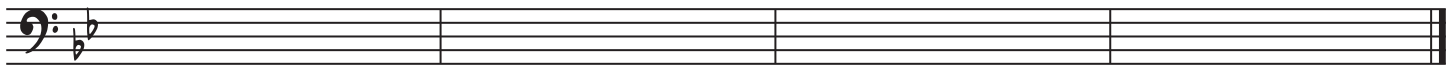
F⁷

B^{b7}

G^{7(b9)}

C^{MIN7}

F⁷



9