

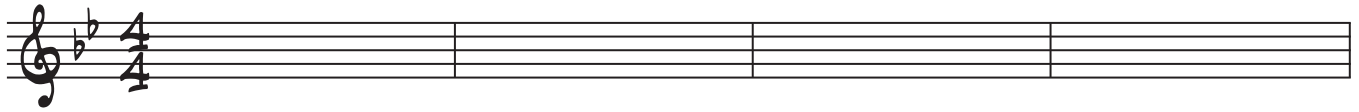
THE BLUES

B^b7

E^b7

B^b7

B^b7



E^b7

E^b7

B^b7

B^b7



5

F⁷

E^b7

B^b7

F⁷



9

B \flat INSTRUMENTS

THE BLUES

C⁷

F⁷

C⁷

C⁷



F⁷

F⁷

C⁷

C⁷



5

G⁷

F⁷

C⁷

G⁷



9

THE BLUES

The image shows three blank musical staves for Eb instruments, each with a treble clef, a key signature of one sharp (F#), and a 4/4 time signature. The staves are divided into four measures each. Above the first staff, the chord progression is G⁷, C⁷, G⁷, and G⁷. Above the second staff, the chord progression is C⁷, C⁷, G⁷, and G⁷. Above the third staff, the chord progression is D⁷, C⁷, G⁷, and D⁷. The number 5 is written below the first staff, and the number 9 is written below the third staff, indicating fingerings for the first notes of the first and third measures respectively.

BASS CLEF INSTRUMENTS

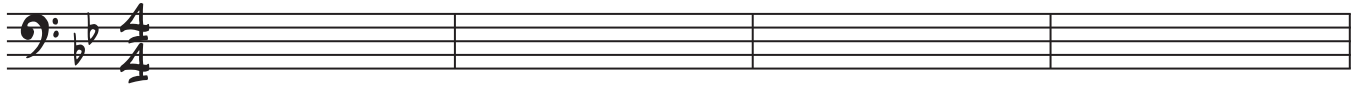
THE BLUES

B^{b7}

E^{b7}

B^{b7}

B^{b7}

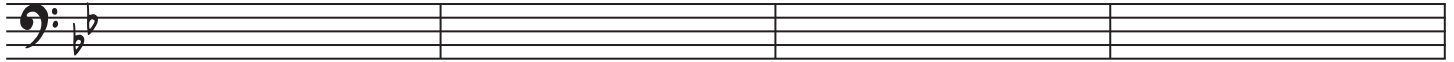


E^{b7}

E^{b7}

B^{b7}

B^{b7}



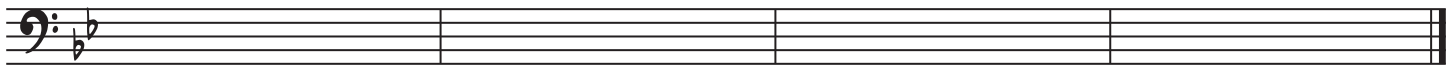
5

F⁷

E^{b7}

B^{b7}

F⁷



9